



DATA SHEET

MODEL NO : HI401

DATE : MAR,24,2000

DEPARTMENT : R&D 2

REVISION : 1.0

RECEIVED			
<input checked="" type="checkbox"/> MASS PRODUCTION			
<input type="checkbox"/> PRELIMINARY			
<input type="checkbox"/> CUSTOMER DESIGN			
DEVICE NUMBER : DHI-092-009			
PAGE : 6			
CUSTOMER	DESIGNER	CHECKER	APPROVER

REV	DESCRIPTION	RELEASE DATE

OFFICE: NO 25,Lane 76,Chung Yang Rd, Sec.3 Tucheng, Taipei 236, Taiwan, R.O.C.

TEL : 886-2-2267-2000,2266-9936 (22 Lines)

FAX : 886-2-2267-6189

<http://www.everlight.com>



DEVICE NUMBER : DHI-092-009 REV : 1.0
ECN : _____ PAGE : 1/6

Hall Integrated Circuit

MODEL NO : HI401

■ Features :

- 4V to 20V operation.
- High reliability.
- Small size.
- Output compatible with all digital logic families.
- Reverse voltage protection.

■ Description :

- The HI401 is a magnetic sensor used in electric commutation of DC brushless motor applications mostly. The HI401 has a latching behavior and requires a magnetic north and south pole for correct function. The output does not change if the magnetic field is removed. The sensor is designed for industrial and automotive applications and operates at as low as 4 volts.

■ Applications :

- Brushless DC motor.
- Rotation detection.
- Displacement detection.
- Speed sensing.

PART	CHIP	COLOR
	MATERIAL	
HALL IC	SI	BLACK



DEVICE NUMBER : DHI-092-009 REV : 1.0
 ECN : PAGE : 3/6

Hall Integrated Circuit

MODEL NO : HI401

■ Absolute Maximum Ratings at T_A = 25°C

Parameter	Symbol	Rating	Unit	Notice
Supply Voltage	V _{CC}	20	V	
Supply Current	I _{CC}	25	mA	
Output Current	I _{OUT}	Continuous 300 Hold 400 Peak(Start up) 600	mA	
Maximum Power Dissipation	P _D	500	mW	
Operating Ambient Temperature	T _A	-20 ~ +85	°C	
Storage Temperature	T _{STG}	-55 ~ +120	°C	
Soldering Temperature	T _{SOL}	260	°C	1/16 inches from body for 5 seconds

■ Electronic Characteristics :

T_A = 25°C

Parameter	Symbol	MIN.	TYP.	MAX.	Unit	Condition
Supply Voltage	V _{CC}	4	---	20	V	Operating
Output Saturation Voltage	V _{CE(SAT)}	---	250	600	mV	V _{CC} =14V I _{OUT} =400mA B>Bop
Supply Current	I _{CC}	---	18	25	mA	V _{CC} =20V Output Open
Output Leakage Current	I _{LEAK}	---	---	10	μA	V _{CE} =14V V _{CC} =14V
Output Rise Time	t _r	---	3.0	10	μS	V _{CC} =14V, R _L =820Ω, C _L =20pF
Output Fall Time	t _f	---	0.3	1.5	μS	
Switch Time Differential	Δt	---	---	10	μS	

■ Magnetic Specification :

T_A = 25°C

Condition: V_{CC}=20V, B_S=MAX[ABS(Bop), ABS(Brp)]

Unit: Gauss

Bin Number	Bin1	Bin2	Bin3	Bin4
B _S	<70	<100	<140	<200



Hall Integrated Circuit

MODEL NO : _____ HI401

■ Typical Characteristics Curves:

Fig. 1 Supply Current V.S. Supply Voltage

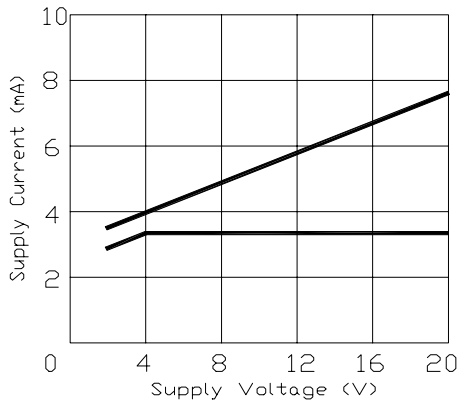


Fig. 2 Output Low Voltage V.S. Supply Voltage

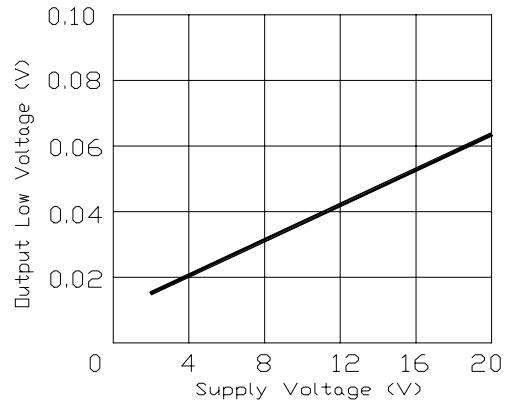


Fig. 3 Switch Points (Bop,Brp) V.S. Supply Voltage

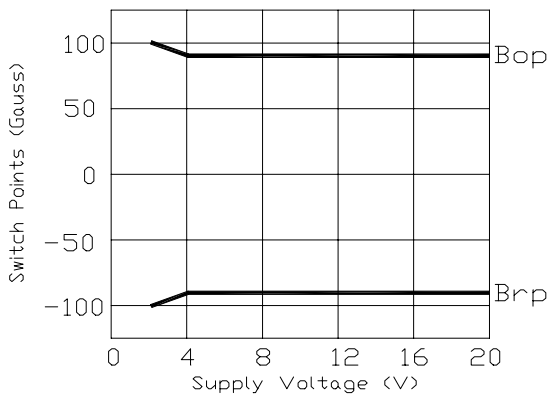


Fig. 4 Switch Points V.S. Ambient Temperature

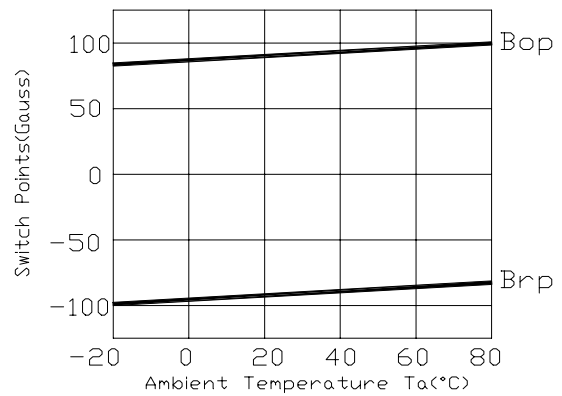


Fig. 5 Supply Current V.S. Ambient Temperature

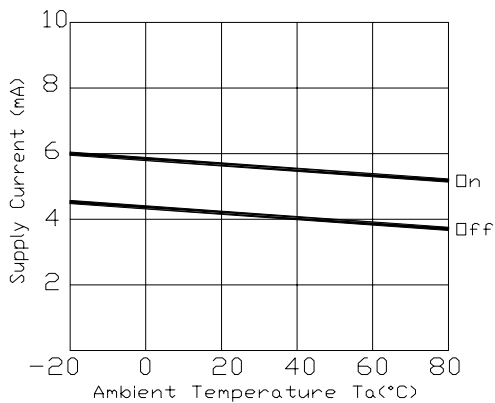
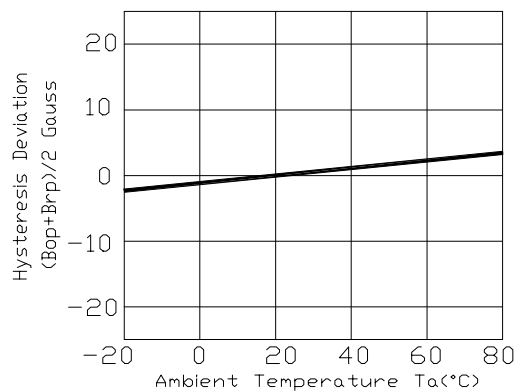


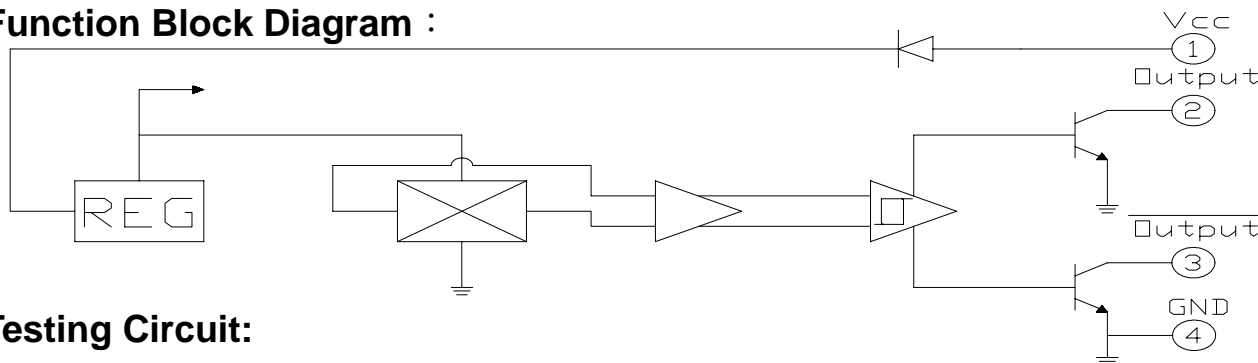
Fig. 6 Hysteresis Deviation V.S. Ambient Temperature



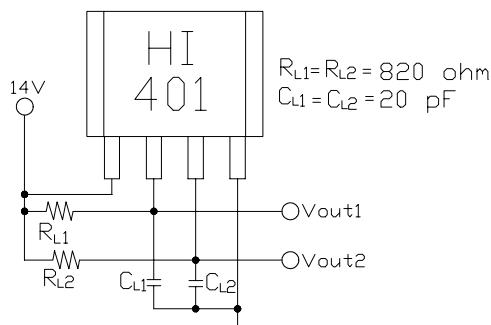
Hall Integrated Circuit

MODEL NO : _____ HI401 _____

Function Block Diagram :



Testing Circuit:



Reliability:

The reliability of products shall be satisfied with items listed below.
 Confidence level : 90% ; LTPD : 10%

Test Items	Test Conditions	Failure Judgement Criteria	Samples(n)
			Defective(c)
Operation life	$V_{CC}=12V, T_a=25^{\circ}C$ 1000hrs	L : Lower Specification Limit U : Upper Specification Limit	n=22 , c=0
Temperature cycle	1 cycle $-55^{\circ}C$ to $+85^{\circ}C$ (30min)(5min)(30min) 50 cycle test		n=22 , c=0
Thermal shock	$-10^{\circ}C$ to $+100^{\circ}C$ (5min) (10sec) (5min) 50 cycle test		n=22 , c=0
High temperature storage	Temp : $+150^{\circ}C$ 1000hrs		n=22 , c=0
Low temperature storage	Temp : $-55^{\circ}C$ 1000hrs		n=22 , c=0
High temperature High humidity	TA : $85^{\circ}C$ RH : 85% 1000hrs		n=22 , c=0
Solder heat	Temp : $260 \pm 10^{\circ}C$ sec 4mm from the bottom of the package		n=22 , c=0



EVERLIGHT ELECTRONICS CO., LTD.

DEVICE NUMBER : DHI-092-009 REV : 1.0
ECN : _____ PAGE : 6/6

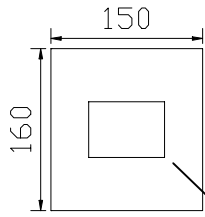
Hall Integrated Circuit

MODEL NO : _____ HI401 _____

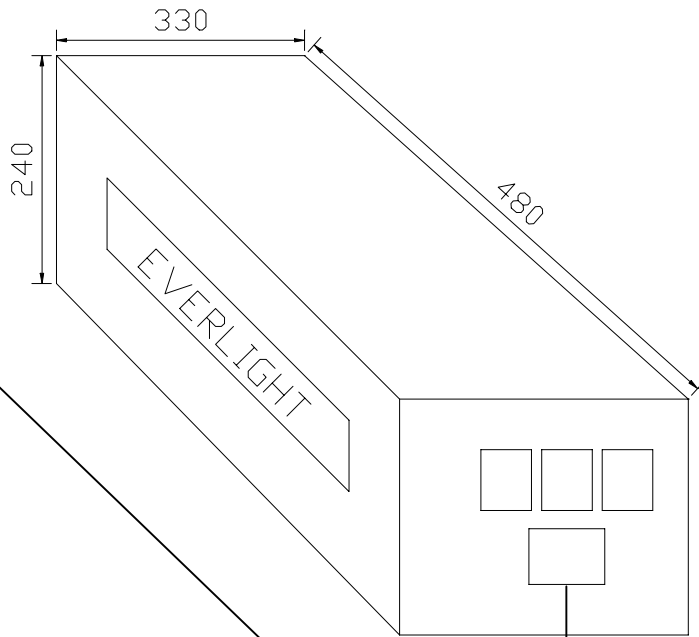
■ Packing Specifications:

(UNIT : mm)

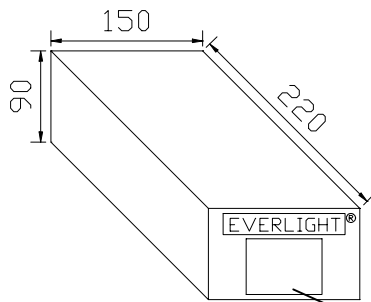
1. Bag:



3. Carton:



2. Box:



■ Packing Quantity Specification:

- 1. 1000Pcs/1Bag, 10Bags/1Box
- 2. 10Boxes/1Carton

■ Label Specification:

- CPN : Customer's Production Number
- P/N : Production Number
- QTY : Packing Quantity
- CAT : Ranks
- HUE : Reference
- REF : Reference
- LOT NO : Lot Number
- MADE IN TAIWAN : Production Place

Label

EVERLIGHT

CPN:

P/N:



HI401

QTY:



LOT NO:

CAT:

HUE:

REF:

MADE IN TAIWAN